

Poem

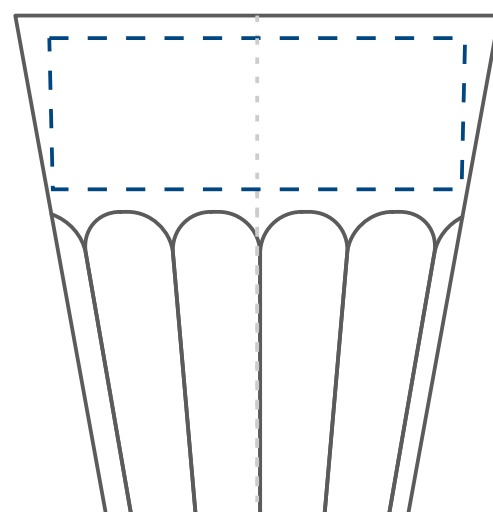
90 ml

SKALA
1:1

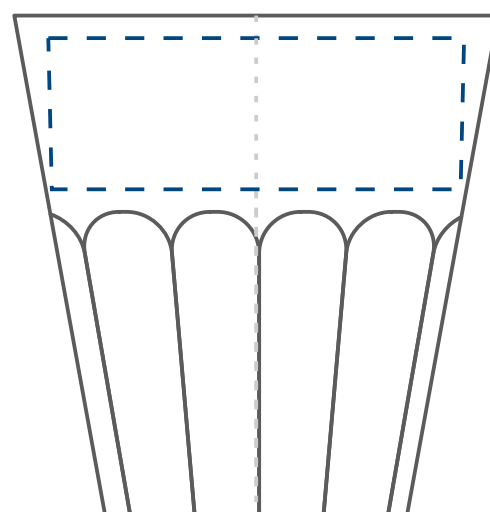
Standardowa
powierzchnia
zdobienia

Kalkomania,
Sensitive Touch (piaskowanie)
z jednej / dwóch stron

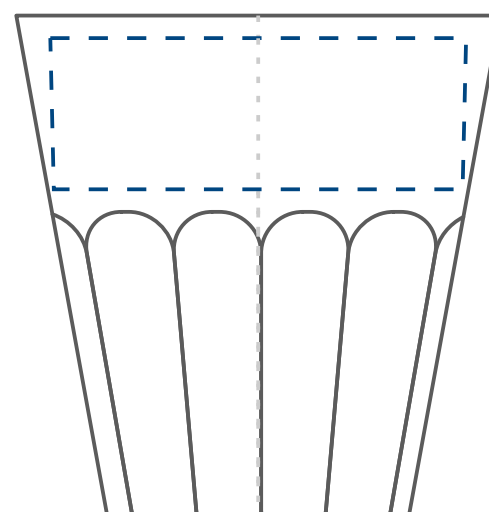
55 x 20 mm



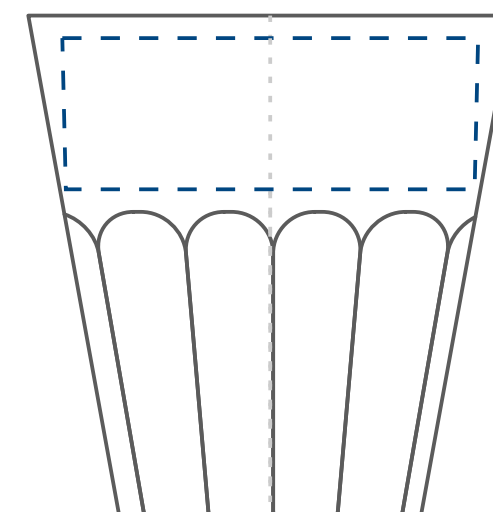
55 x 20 mm



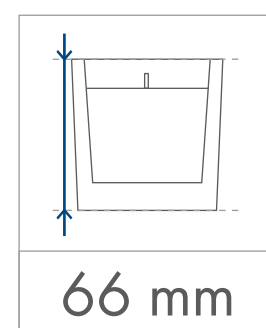
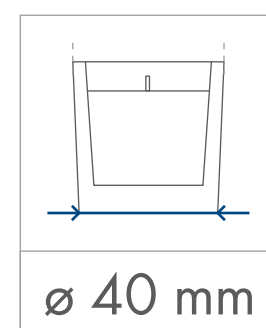
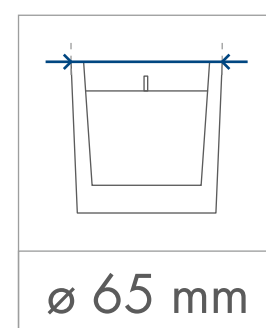
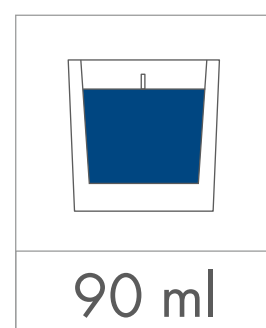
55 x 20 mm



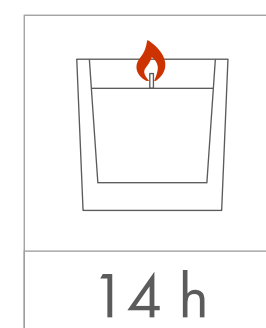
55 x 20 mm



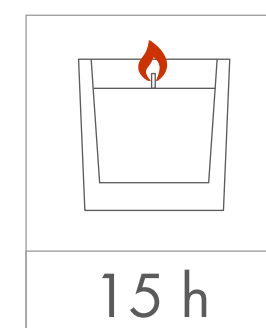
wymiary
świeczki



minimalny
czas palenia



parafina



wosk
sojowy

Jak przygotować
plik do druku



projekt
wektorowy

·

typ pliku
cdr | pdf | eps | ai

kolory
Pantone

czcionki zamienione
na krzywe

minimalna grubość
linii - 0,2 mm

|

projekt
rastrowy

·

typ pliku:
tiff

rozdzielczość:
300 dpi

Poem

250 ml

SKALA
1:1

Standardowa
powierzchnia
zdobienia

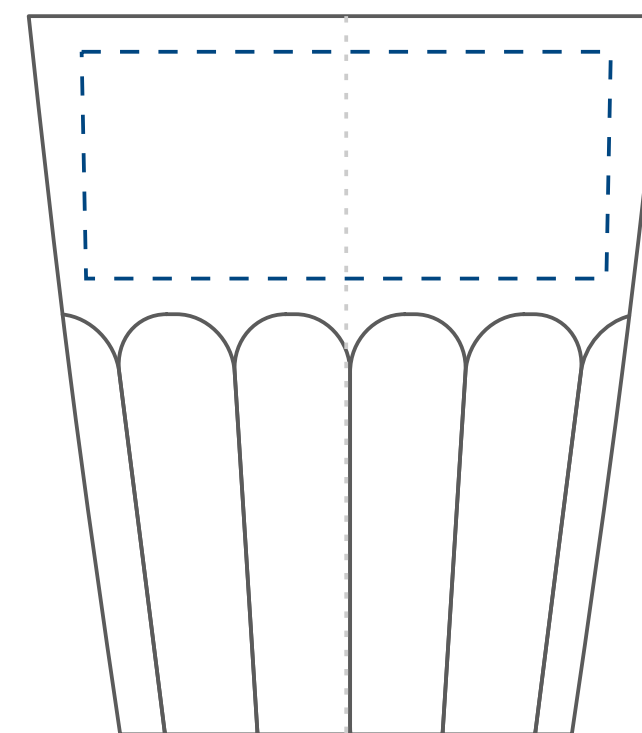
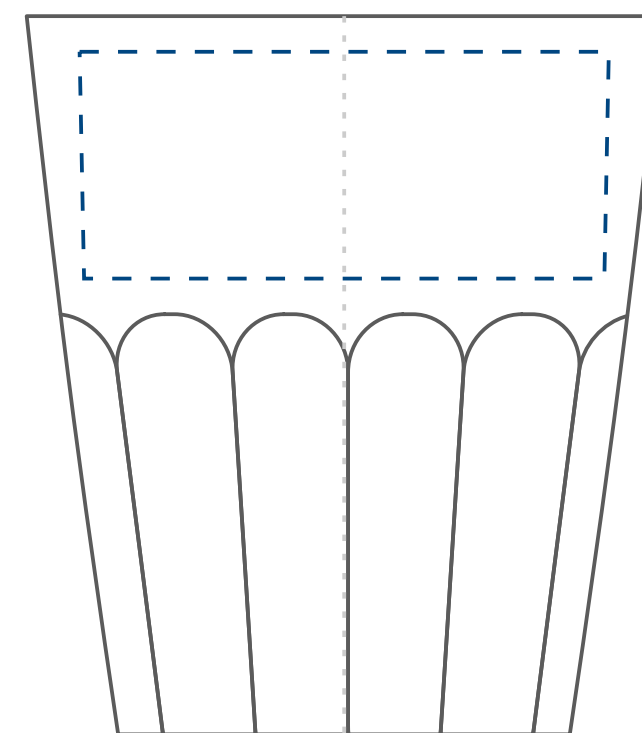
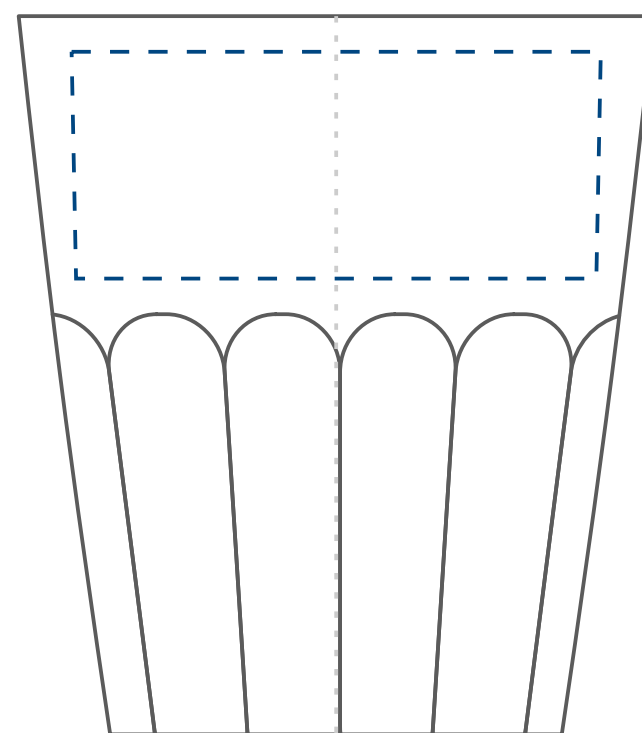
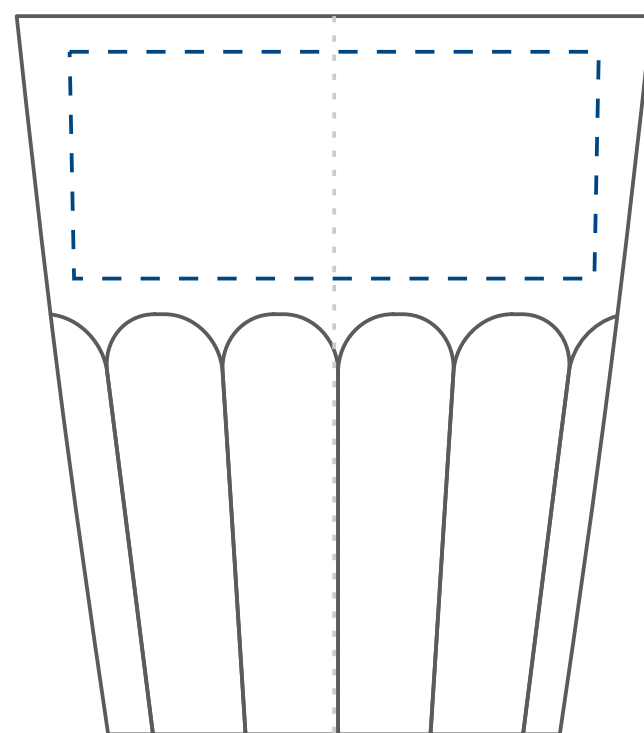
Kalkomania,
Sensitive Touch (piaskowanie)
z jednej / dwóch stron

70 x 30 mm

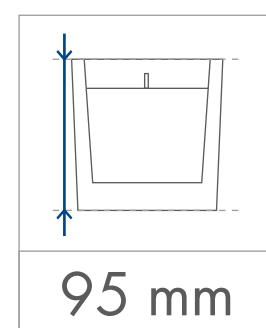
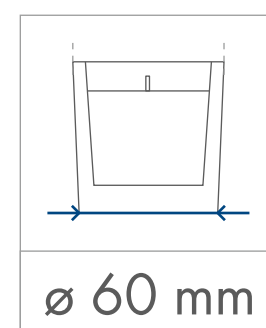
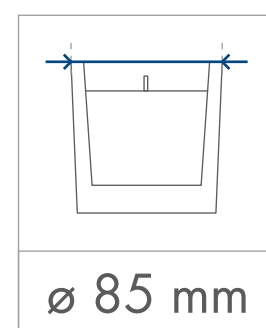
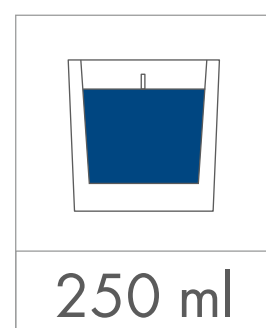
70 x 30 mm

70 x 30 mm

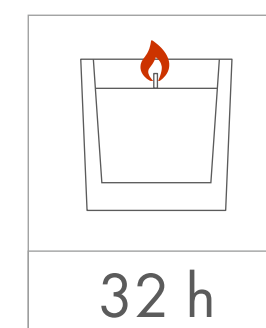
70 x 30 mm



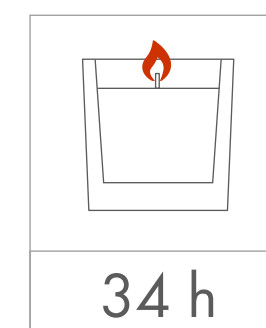
wymiary
świeczki



minimalny
czas palenia



parafina



wosk
sojowy

Jak przygotować
plik do druku



projekt
wektorowy

·

typ pliku
cdr | pdf | eps | ai

kolory
Pantone

czcionki zamienione
na krzywe

minimalna grubość
linii - 0,2 mm

|

projekt
rastrowy

·

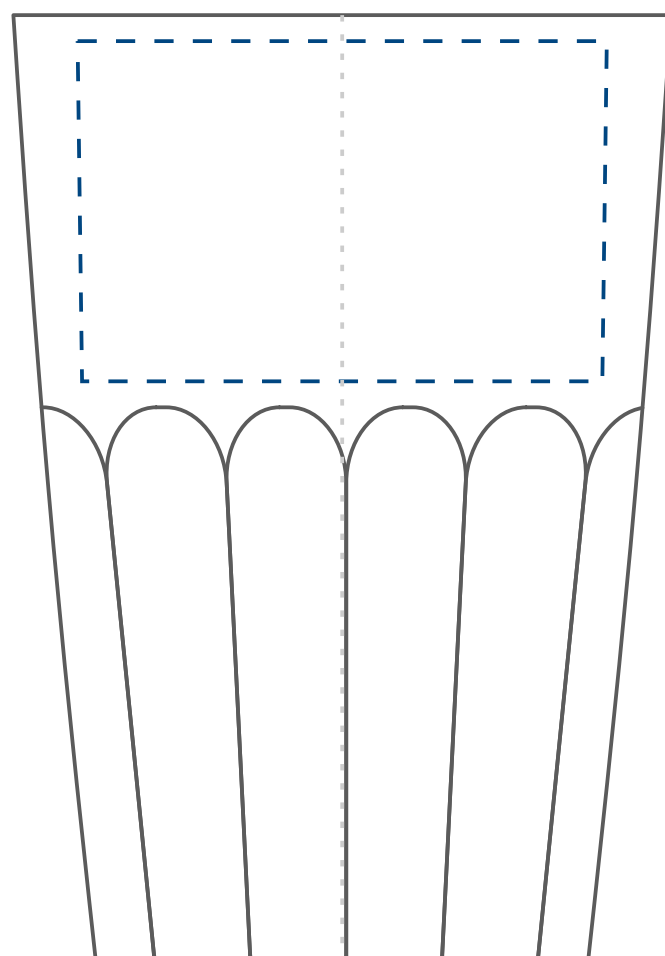
typ pliku:
tiff

rozdzielczość:
300 dpi

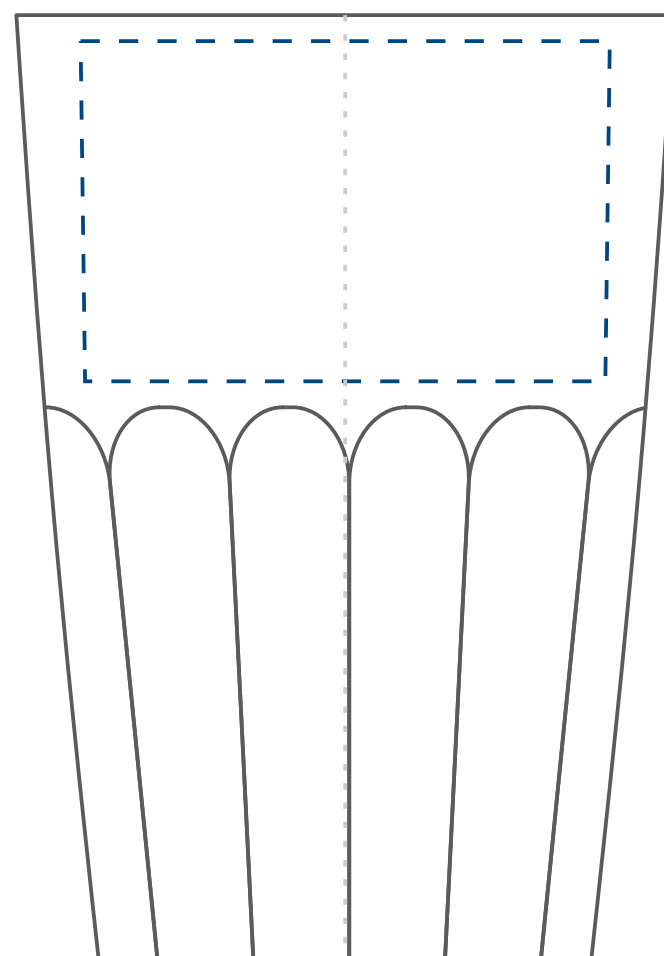
Standardowa
powierzchnia
zdobienia

Kalkomania,
Sensitive Touch (piaskowanie)
z jednej / dwóch stron

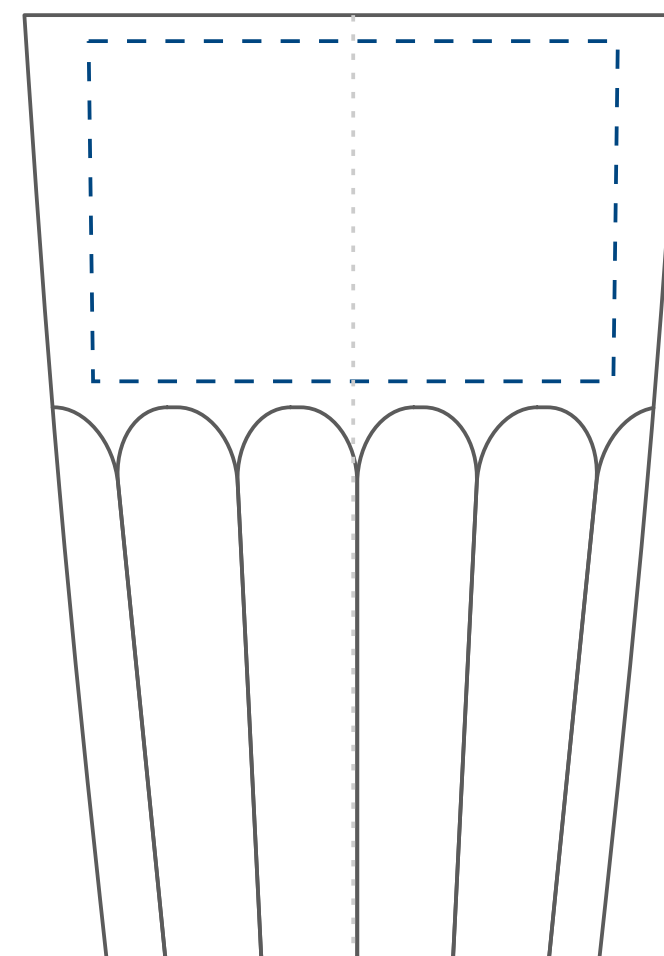
70 x 45 mm



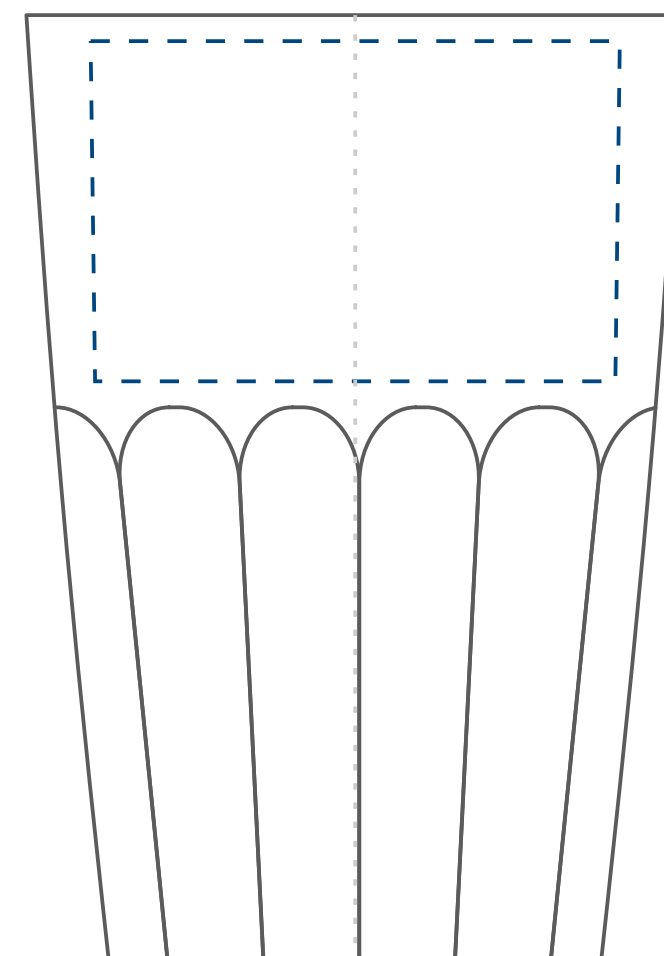
70 x 45 mm



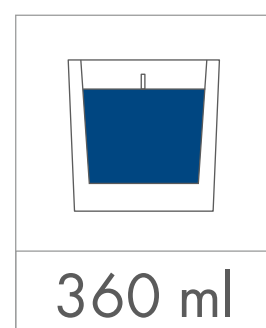
70 x 45 mm



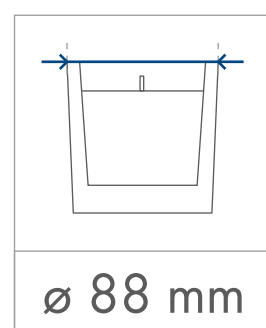
70 x 45 mm



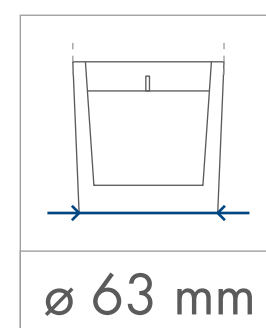
wymiary
świeczki



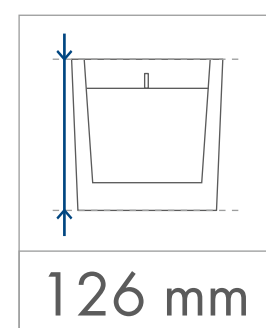
360 ml



ø 88 mm

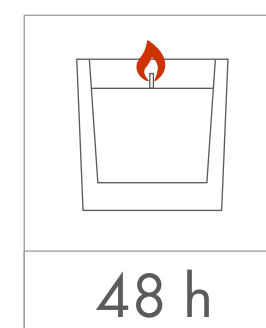


ø 63 mm



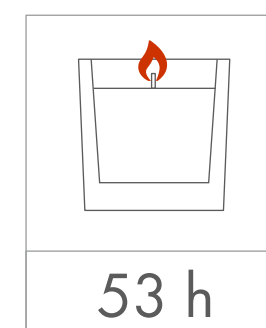
126 mm

minimalny
czas palenia



48 h

parafina



53 h

wosk
sojowy